

The Welwyn Magazine



October 2020

www.welwyn.org.uk

60p

CONTENTS

October 2020

PUBLISHERS:

St Mary's Churchwardens

COVER IMAGE:

Autumn/Hallowe'en
by Peter Branchflower.

MAGAZINE articles:

Send by 1st of preceding month.

Include your contact details.

Email magazine@welwyn.org.uk
or place in the 'Magazine'
pigeon hole in St Mary's church
marking items 'Magazine'.

MAGAZINE hard copies:

All print and distributions have
now resumed.

Normally: monthly deliveries are
arranged by Jane Carr and copies
are available in all:

Welwyn Team Ministry churches

Welwyn: Danesbury shop
Village Wines
Lemon Plaice

Digswell: Welwyn North
Stores

Oaklands: Mardley Stores
Post Office

MAGAZINE printers:

Triographics Printers Limited
121 London Road, Knebworth
Herts SG3 6EX
t: 01438 811905
e: alantriog@aol.com

The Rector's letter.....	3
Jessie the Rectory Dog	5
Snippets.....	5
Patient Participation Group	7
July PCC Meeting.....	9
Mardley Hill WI	11
Subscriptions	11
Jean Chipperfield Obituary	13
Harvest Festival	15/17
Neighbourhood Watch.....	19
Welwyn Natural History Society.....	21
July/August Quiz answers..	22/23/24
Welwyn Parish Council.....	24/25
Village Neighbours.....	26/27
Welwyn Scouts	28/30/32
News from Ayot St Peter.....	34
Hallowe'en in Welwyn	36
Woolmer Green Parish Council.....	38
Friends of Danesbury and QVM	40
Fairtrade under lockdown.....	42
Church Notice Boards	44/46
Meditation.....	48

Editor's Note:

We normally publish reports on activities and meetings occurring in the village but these activities have inevitably been cancelled due to Covid-19. Hence, therefore, there is little to report!

We would welcome any articles on local matters from our readers. Please send details on e:mail to:

magazine@welwyn.org.uk or contact St Mary's church office on **01438 840964**

EDITOR'S NOTES

Articles by the 1st of the month preceding publication, see details above.

The Editors reserve the right to shorten or omit articles or refuse advertisements.

The opinions expressed in this magazine are not necessarily those of the Clergy, Editors or Publishers.

Advertisements included in the magazine does not imply their endorsement by the Clergy, Editors or Publishers.



Home. There's no place like it!

Home Instead Senior Care are an Award Winning Home Care company providing one-to-one care tailor made to your individual requirements.

Services Include:

- * Companionship & Home Help
- * Local Transportation & Errands
- * Meal Preparation & Shopping
- * Respite & Convalescence Support
- * Personal Care
- * Specialist Dementia Care

and much more...

To find out how we can help you call
01707 240 650

www.homeinstead.co.uk/welwyn



Affordable Roofline

**For a Free Quote Call Ashley on
07983-176318**

— ROOFING & GUTTERING —

**Fascia-Soffit-Gutters-Cladding-
UPVC-Roof Repairs & Cleaning**

Flat roofing & tiling

Fully Insured & Guaranteed

Email: Ashleyrigden1@hotmail.co.uk

The Rector's Letter

Dear Friends

October is a time when many churches celebrate harvest – in St Mary's Welwyn on the 4th of October. Obviously this year the celebrations will look rather different in this time of pandemic, but for many people it is one of their favourite celebrations of the year – particularly in village churches which may well be bedecked with assorted fruits of the harvest.

It is a time when we give thanks for God's bountiful provision for us, and that is quite right. Earlier in the year when lockdown first came into force it became very obvious how intricate and complex supply lines to supermarkets were. And reflecting on that might be a good theme for this harvest.

The danger is that harvest can simply become a sentimental journey to a non-existent time of pastoral idyll when most people in villages would have worked on the land, in comparison with the handful of villagers who work the land today on highly mechanised farms. And neither should we be over sorry that those days are gone – rural labourers had a hard and sometimes short life, and there was much hardship within families.

COVID19 has brought home some home truths about how our economy works. In particular, how much we depend on those who are often in quite low paid jobs to keep the country running. Not just the NHS and care workers, but also delivery drivers, food producers, supermarket workers, utility workers and all those who kept vital supplies and services running during these restrictions. To them we owe a great deal of thanks. And as there will be a necessary austerity to deal with the severe economic downturn, I wonder whether we can avoid making those same people bear the brunt of that.

Whether that can be avoided will be a real test of what sort of justice our market economy can deliver.



David



HCPC Registered Podiatrist

Diane Fletcher

BSc (Hons) Podiatry, MChS

FlexiFootCare

Mobile Podiatry / Chiropody Services

Offering a professional foot care service at affordable prices in the comfort of your own home

- Nail care, Corns, Callus, Verruca, Athletes foot
- Ingrown toenails - advice & conservative treatment
- Diabetic foot assessments
- Simple insole therapy & Foot pain

Call: 0790 3293533

Email: flexifootcare@hotmail.com

Website coming very soon

Discounts for 3 or more in one location & competitive rates for care homes & day centres

Office Blinds ~ Domestic Awnings

The Complete Window Service

fairlight blinds & curtains

Free Quotations

34 Bury Lane ~ Codicote
Hertfordshire ~ SG4 8XX

Tel: 01438 820171

Fax: 01438 820171

Mobile: 07976 599902

email: info@fairlightblinds.co.uk

www.fairlightblinds.co.uk

Plated Blinds ~ Wood Weave

Roller Blinds ~ Venetians ~ Verticals ~ Romans

Curtains & Soft Furnishings ~ Range of fabrics available

TRIOGRAPHICS PRINTERS LIMITED

Est.1977

XEROX DIGITAL

T: 01438 811905

E: alantriog@aol.com

121 London Road, Knebworth SG3 6EX

New addition Xerox Versant 80



- Magazines
- Programmes
- Booklets
- Stationery
- Leaflets
- Business cards
- Newsletters
- Mailings/fulfilment
- Personalisation
- Scanning
- In-house finishing

ACCOUNTANCY & BOOK-KEEPING SERVICES

Specialists To The Self-Employed & Small Business

Self-Assessment Tax Returns/Financial Accounts
Book-Keeping/V.A.T./P.A.Y.E./C.I.S. Schemes etc.

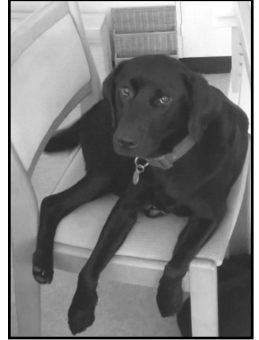
Contact - Steve or Anne Vine on 01438 717105

31 Wilga Road-Welwyn-Herts-AL6 9PT

JESSIE—The Rectory Dog

Harvest – one of those less theological festivals which we canines can really invest in. It's just a shame there is so much salad, vegetable and fruit around – not really my kind of thing. What we canines love is meaty protein and carbohydrate, and to be fair we are none too fussy about its quality either. We've heard all about the dangers of obesity in a time of pandemic, and as my contribution to the cause I will be willing to help out by eating any of that calorifically intense junk food which is no good for you at all. Maybe you have some in your kitchen cupboards hoarded by mistake – if

so I'm your dog. I've also heard much about the possibility of a vaccine. Now I'm slightly worried, but I'm hoping that dogs won't have to have it, because it sounds like a 'jection, and I've written before on the subject of my animosity to 'jections – you have been warned



Jess



Snippets

Lock Down
The fluidity of the situation is such that it is difficult to keep up with the regulations which might impact on any future activities mentioned in magazine articles. You are therefore advised to check, where possible, that places are opening, events are taking place etc .

Coloured Pictures
Pictures within the magazine are not in colour but at present we are also publishing the magazine on the Church web site so if you would like to see all the Harvest Festival and other pictures in glorious colour please log onto www.welwyn.org.uk/magazine



Care visits at home

We care passionately

For many people the questions about care don't arise until suddenly, there is a need.

Home care with Bluebird Care can be anything from as little as 30 minutes up to several hours a day, supporting you to remain as independent as possible, living the lifestyle you choose.

Call and talk to one of our friendly professionals today:



01707 263 723

bluebirdcare.co.uk/welwyn-hatfield
welwynandhatfield@bluebirdcare.co.uk

We are independently regulated

Physio
Vineyards

Independent Physiotherapy & Sports Injury Clinic

Musculoskeletal problems, sports injuries, orthopaedic rehabilitation,

Treatments include:

soft tissue massage, manipulation,
mobilisation, exercise prescription,
ultrasound, electrotherapy,
biotherapy laser & acupuncture
Podiatrist on Wednesday mornings

Reformer Pilates and sports massage Mon-Fri

OPEN:

Varying times depending on days
Mon-Fri: from 8am to 7.30pm

Tel: 01438 716838

The Vineyards, 15a Codicote Road, Welwyn, AL6 9NE
www.physiovineyards.co.uk
practice@physiovineyards.co.uk



ACORN PLAYGROUP & PRE-SCHOOL

from little acorns, great oak trees grow

OFSTED OUTSTANDING Nursery School

FREE PLACES Children Aged 2 To 4 Years*

LARGE Classrooms + Secure Garden

ESTABLISHED over 20 years

OPEN Mon to Fri term-time 9am – 4pm

LARGE CAR PARK easy access

Established in 1992 in Oaklands, now located in Welwyn Village

*Government funding for 2 year olds (criteria applies) and 3-4 year olds

Whitehill, Off School Lane
 Welwyn, Hertfordshire AL6 9FN

For more information call 01438 840132
 or visit www.acornwelwyn.com

Registered Charity Number 1054698





Stop in October!

On average, smokers live 10 years less than non-smokers. Smoking tobacco is the biggest avoidable cause of death.

Why should I stop smoking?

You'll improve your chances of living longer, feel better and have more money to spend on things and activities you like doing, like holidays

If you already have a lung condition, stopping smoking is the best step you can take for your health and quality of life. It will help you cope with your symptoms and stop your condition getting worse. For example, smokers are 5 times more likely to catch flu.

It's never too late to stop, no matter how long you have smoked for. Your lungs will work better, even if you stop when you're over 60. If you stop smoking when you're 30, you're likely to live 10 years longer.

Your friends and family will be healthier too. People who breathe in second-hand smoke are at risk of the same diseases as smokers. Second-hand smoke is particularly dangerous to babies and children as their lungs are still developing and are much more vulnerable to breathing in toxic materials.

Stopping is a key way to protect your children's health in the long term. Children are much more likely to take up smoking if their parents smoke.

British Lung Foundation's top tips for stopping smoking:

Pick a date to stop and decide you'll be a non-smoker from that day. Tell your family and friends and plan something fun to take your mind off it.

Ask your friends and family for support. If someone close to you is thinking of stopping, why not stop at the same time so you can support each other?

Get rid of everything in your home or at work that reminds you of smoking.

Call yourself a non-smoker and think of yourself as one.

Think about the possible withdrawal symptoms and how you will cope.

For further advice and support with quitting, speak to your community pharmacist or call 0800 389 3998 or text SMOKEFREE to 80818 to access local stop smoking clinics.

If you would like further information about the Bridge Cottage Surgery Patient Participation Group please email ppgbridgecottage@gmail.com



Luxury Travel Agency in Welwyn

No. 1 Top Travel Agency in the UK & Ireland for 2017

18-20 Prospect Place, Welwyn, Herts, AL6 9EN
enquiries@offbroadwaytravel.com | www.offbroadwaytravel.com

FOLLOW US ON: FACEBOOK | TWITTER | INSTAGRAM | PINTEREST

I & B Electrical

*Free Quotes and
Competitive Prices*

Rewires & Fuse Boxes

Additional Lights, Sockets,
TV Points

Fault Finding

Security Lighting

Carbon & Smoke
Detectors

Periodic Inspections
& PAT Testing

All work tested by our
registered engineer



Daytime: 07861 398288

Evening: 01707 262771

www.ib-electrical.co.uk



*Stevenage Glass
Company Ltd*

Your One Stop Glass Centre

We provide a full selection of
glass, glazing materials, mirrors,
coloured splashbacks & more

For more information please visit our
showroom or website below

PLEASE CALL US ON

01438 369 311

SHOWROOM & HEAD OFFICE

Cavendish Road Stevenage Herts

SG1 2EU

www.stevenage-glass.co.uk

July PCC Meeting

The most recent PCC meeting was held on Monday 20th July, socially distanced in Church House, and remotely (over Zoom). Topics for discussion included the approval of the church's accounts for the previous year and the installation of a contactless terminal to boost general giving, including maximising giving at occasional offices (weddings, baptisms, etc.). The outgoing treasurer, Don Bell, also welcomed his replacement, Maggie Varco onto the PCC, as he is stepping down this year. The PCC would like to extend a great deal of thanks to Don for all his effort.

Following this, the PCC also discussed the replacing of the current boiler in time for winter, and issues with both the northern and eastern walls in the churchyard. David reminded the PCC that Dominic would soon be leaving, and of the garden party to say goodbye to him. It was decided that a group including the Incumbent, Ministry Team, and Church Wardens would meet in September to discuss the way forward with regard to services provided once COVID-19 had passed, and that this would also include focus on offerings to children and young people.

The issue of green energy suppliers was also touched on – our outgoing Treasurer, Don Bell, had kindly researched greener energy suppliers than the church's current choice. It was decided that the Standing Committee would move forward with choosing a new supplier, and report back to the PCC. Following the easing of lockdown, it was noted that a focus needed to again come back to the parish's Mission Action Plan – a group of PCC members agreed to meet in order to discuss how to move forward with putting the plan into action. The meeting ended, as is customary, with a prayer.

As an aside, I will also be moving on as PCC Secretary after the upcoming APCM (Wednesday 14th October). If anyone would like any further information about the role, and what it entails, please feel free to contact either the Rector, or myself.

Daniel Holroyd-Thomas
daniel.holroyd-thomas@outlook.com

NEEL DENTISTRY

General Dentistry.
 Childrens Dentistry.
 Hygienist - Direct Access Available.
 Tooth Whitening.
 Smile Makeovers.
 Tooth Straightening - Braces.
 Wrinkle Reduction / Facial Aesthetics.
 Dental Implants.
 Nervous Patients Cared For.
 Available Evening & Weekends.



FOR MORE INFORMATION
 OR TO
 BOOK YOUR
 NEW PATIENT EXAMINATION

VISIT AT
WWW.NEELDENTISTRY.COM
 OR CALL
 01438 712713

NEEL DENTISTRY | 43 HIGH STREET | WELWYN | HERTS | AL6 9EE



Homewood
 Heating & Plumbing



PLUMBER & HEATING ENGINEER

- Boiler Repairs, Servicing & Replacements
- Central Heating Repairs & Installation

01438 517314 or 07977 924459
milton@homewoodplumbing.co.uk
www.homewoodplumbing.co.uk

CHIMNEY SWEEPING



We are a family run business Chimney Sweeping business based in Stanstead Abbots, Hertfordshire and cover all areas of Hertfordshire, Essex and North London.

WE OFFER THE FOLLOWING SERVICES:

- Cowls, Bird Guards, Chimney Caps supplied & fitted.
- Bird Nest Removal
- CCTV Inspections
- Smoke Evacuation Check
- Insurance Approved Certificate issued on Completion of Work

TALLANT

Kevin Tallant 07904 025301
kevin@tit-chimney-sweeping.co.uk
www.tit-chimney-sweeping.co.uk
 5 Mill Race, Stanstead Abbots, Hertfordshire, SG12 8BZ



John Spinks

PAINTER & DECORATOR

INTERIOR/EXTERIOR

DULUX NETWORK MEMBER

TEL: 01707 266118

JDS Window Cleaning

We clean windows & frames
 Patios & Driveways Pressure Washing
 Fascias & Conservatories

POLE-FED PURE WATER SYSTEM

Call Luka on: 07713 490 773

Mardley Heath WI

Every August our meeting takes place in a garden, so for the first time since February (except for a pub lunch in March just before lockdown) we were able to see a few fellow members - only a few. Transport and other problems led to only twelve of us turning up, split between two different gardens.

The weather was kind and it was bliss to chat and catch up on our news as we enjoyed refreshments under the trees.

We have no idea how long it will be until regular meetings resume.

MARJORIE SANDIFORD

THE WELWYN MAGAZINE—Subscriptions

We are pleased that from last month we have resumed printing and distributing the parish magazine. We shall continue publishing it on the Welwyn web site for the remainder of this year. As we explained last month we should have collected subscriptions back in May but lockdown prevented this being done. We have decided to postpone asking for subscriptions until May 2021 when we will be asking for £10 which will cover magazines which will have been distributed up to May 2021 plus the year's subscription for the magazines to be distributed from May 2021 onwards. The individual magazine price will remain at 60p. We hope that this will be acceptable.

The Magazine Committee

Foot Fit



Caroline Davies

Dip.CFHP MPSPract(FHP)

07747 346181

Home Visits

- Removal of painful corns and callus.
- Treatment of fungal nail infections and verrucae.
- Nail trimming.
- Reduction of thickened nails.
- Management of cracked heels.
- Ingrown toenail treatment.



Foot Health Professional



Mardley Herbal

Marie Carr BSc (Hons) MNIMH

Medical Herbalist | FSM Practitioner | First Aid trained

Do you want to manage your own health and wellness?

Anxiety, depression, disturbed sleep?

Chronic pain or a long-standing condition?

Have a minor health issue or symptoms that aren't improving?

**Why not try a different approach.
Appointments available evenings and weekends.**

07973 303617

info@mardleyherbal.com

www.mardleyherbal.com

WOOLMER GREEN HALL

AVAILABLE TO HIRE
for parties, meetings, clubs,
conferences.

**Licensed for wedding &
civil ceremonies.**

WOOLMER GREEN MARKET

Food & Craft

Fourth Sunday of the month
9am to 12pm

www.woolmergreenpc.org.uk
Tel: 0370 777 6132

Got a Mac?



Is it slowing down?

Spinning ball?

Need impartial
advice?

We can help.

Macs are renowned for
being reliable and easy to
use, but even the best
can have problems.

Macs2U

Mac Specialists

01462 485561

robin@macs2u.co.uk

facebook.com/
macs2uherts

www.macs2u.co.uk

With over 30 years of
Apple Mac experience,
we can help your Mac
run smoother, play better
with other devices, and
save you frustration.

Has iCloud become iFog
- confused? We can help.

Malware is more
common on the Mac than
ever, we can clean it up.

Jean Chipperfield 1933-2020

Many people in the Parish will have fond memories of Jean Chipperfield, who sadly passed away in May.

Jean was born in London in 1933 and enjoyed a happy childhood with her three sisters Joyce, Dorothy and Olive. On leaving school at 14 Jean began working as a booking clerk at the Strand Palace hotel in London. It was there that she met her future husband Ian, a chef. They married when Jean was 19 and had a daughter Susan.

In the 1950s they moved to Woolmer Green where Ian became manager of the village Fine Fare Shop (known to all as the Top Shop). After many happy years there the family moved to a house in Garden Road.

Jean was an integral and active member of St Michael's Church where she ran the Sunday School for many years. She was also involved in community life in both Woolmer Green and Welwyn, where she belonged to many groups, including the Women's Institute, Church Fellowship, and Mothers' Union.

Susan married and moved to Oxford, where Jean loved to regularly visit her 3 grandsons, Simon, Adam and Ben.

After Jean was widowed 10 years ago, she continued to live in Garden Road, but a year ago ill health forced



her to relocate to Oxford to live with Susan. Although sad to leave the village, she was very happy to spend her last year surrounded by her family, now including 6 great-grandchildren.

As Susan says: "We have many happy memories of times we shared trying to keep up with her "bucket list" -often involving fish and chips and chocolate doughnuts at inappropriate times!!"

Jean will be sadly missed by many but remembered for her wonderful smile, enduring faith, and love of her family and friends.

G.B.



Ken Hodson

Local Computer Hardware and Software Repairs,
Upgrades and Advice for Home and Business

Tel. 07974 156743 / 01582 794723

Email enquiries@kenhodsoncomputerservices.co.uk

www.kenhodsoncomputerservices.co.uk

- No fix, no fee for all repairs – you have nothing to lose
- Low hourly rate
- Most repairs carried out in your home, if not the computer will be picked up from and delivered back to you.
- Problems with Windows / Applications / Internet / networks fixed
- Friendly training and instruction available in plain English
- Advice given on upgrades – many older computers can be upgraded at a fraction of the cost of a new machine.
- Upgrades of hardware and software carried out.

Peter Worby
Antiques Restoration

ANTIQUES RESTORATION

over 40 years experience

All Repairs, Inc. Modern, Polishing

Fully Insured, Free Estimates, No V.A.T.

Tel: 01920 821973

e.mail: peterworby56@gmail.com

www.peterworby.co.uk

CG ACCOUNTING LIMITED

Offering accounting, bookkeeping & tax services to suit all businesses

**PAYE, Payroll, VAT, Self-assessment, Management Accounts,
Annual Accounts Compliance**

Contact Caroline on

Mobile: 07786 863050

Email: info@cgaccounting.co.uk

GILL'S

BATHROOMS & KITCHENS

www.gillsbathrooms.co.uk | www.gillskitchens.co.uk

Gill's Bathrooms & Kitchens
36 Burrowfield
Welwyn Garden City
Herts AL7 4SR

Don't move.
Improve.

Here at Gill's we believe that the kitchen and bathroom are the most important rooms in your home and we're here to help you create that perfect space - whatever your style. Get in touch today to find out how we can help make your dream home.

• Kitchen & Bathroom Installation

• Plumbing & Heating

• Property Maintenance

Email us

sales@gillsbathrooms.co.uk

Give us a call

01707 371 707

HARVEST FESTIVAL



This year, we will be celebrating Harvest at St Mary's on Sunday 4th October. The Flower Team plan to get together on Saturday 3rd October to decorate the church to reflect this time of "gathering in". This year has a special poignancy as we are unable to "gather" as in previous years for all the events associated with the church calendar.



Many of the traditional harvest hymns make the link between the annual harvest of crops and the spiritual harvest of seeing lives transformed. We are unable to express our joy in worship by singing hymns, due to the Covid 19 restrictions. Therefore, it seems particularly important and special this year, to be able to get together at a safe distance to decorate the church, to celebrate our Harvest Festival the next day.

We use traditional Harvest colours which reflect the gorgeous autumn tones that

Parkinson's UK **Welwyn Hatfield Branch**

Do you or a member of your family suffer from **Parkinson's**?
if so help is at hand.

Advice on financial support
Support & respite for carers
Armchair Exercises
Outings
Weekly gatherings
Regular Newsletters
Talks & presentations

Contact John Edwards
Tel: 01992 558247
Mob: 07930 374683

email j.suttill@yahoo.co.uk

Michael Shelley **Electrical**

Qualified Electrician

**"No job
too small"**

Tel: 01438 820 820

Mobile: 07930 243651

Email: michael.shelley@live.co.uk

A member of ElecSa



What's worrying you...?

**Low
Esteem**

Stress

Anger

Anxiety

**Low
Mood**

***Free introductory consultation with a
qualified therapist.***

**We are offering online therapy via Skype, Zoom,
FaceTime, or WhatsApp, so that you can access
the help you need, wherever you are.**

In total confidence call / text 07986 488690
or email info@emotionalskills.uk

www.emotionalskills.uk



HARVEST FESTIVAL (Cont)

we are fortunate enough to see all around us in Welwyn. Many of us have been lucky enough over the past few months to have much more time to acknowledge, admire and identify the gradual changes in the seasons.

“What is life, if full of care, there is no time to stand and stare”.

The walk behind Lockleys Farm was of particular interest in the spring and early summer. The farmer had taken the trouble to put little signs at the gates to the footpaths through the fields, informing us what that particular crop was and what it would be used for.

A joy for me is waiting for the blackberries to be ready to pick and choosing the best ones to savour when I'm dog walking in the Danesbury Nature Reserve.



In previous years, I've been able to order dahlias for the Harvest Festival from the specialist growers, Ayletts, in St Albans. St Mary's Church's Harvest is usually around the beginning of October and unfortunately, Ayletts' dahlia fields are sometimes hit by an early frost. This has happened for the past two years. A great shame as the dahlias are absolutely stunning. My grandfather was a dahlia grower in Peckham, south east London. He only grew dahlias. There wasn't even a grass patch between the rows.



At Harvest Festival, Katie's Bakery in the village provide the bread Harvest mice to dot around the church and also the harvest wheatsheaf. It is a central part of our altar display.

I'm looking forward to seeing the fruits, berries, greenery and flowers which the team will bring to make their arrangements. So much of the produce has come from their gardens or allotments.

The land has yielded its harvest. God our God has blessed us. Psalm 67:6

Jenny Wisewan

Oakview Lodge Care & Nursing Home

At Oakview Lodge Care & Nursing Home, our care is the kind we would want all of our loved ones to receive. In these difficult times the elderly population is particularly vulnerable at home. If you are concerned about how your relative will cope and would like them to have more support, Oakview Lodge provides family-led care in a luxury home. Offering nursing, residential and dementia care, our dedicated team make life comfortable and enjoyable for all our residents, allowing them to live safely and as they choose.

- Person centred care
- Tailored meaningful activities
- Luxury en-suite bedrooms
- Secure spacious garden
- Daily fine dining
- Hair and beauty salon
- Cinema room
- Pub and Café



01707 375 345



www.countrycourtcare.com



Princes Avenue, Welwyn Garden City, AL7 4HQ



GG Carpentry

Gary Gibson

Welwyn & surrounding areas.

Ring for a reliable, friendly service. All jobs considered including floor laying, door hanging, lock fitting, cupboard making, kitchens & general maintenance.

01438 712458 Mobile 07840 766182

SHIRES PEST CONTROL



WASPS- RODENTS – MOLES

Mobile: 07890 131174

Tel: 01767 315101



A.K.C.

Plumbing Services

Free Quotation • No Call Out Charge

• All Work Undertaken

Phone: **Andy**

Mobile: 07976427225

Office: 01438 358966

email: andycas@ntlworld.com

bpec

**City & Guilds
Qualified**

A summer full of scams!



The criminals who spend their time trying to defraud people with scams are always on the look-out for a change in policy that could give them a new angle.

Sometimes it's even possible to predict new scams, as happened with the government's "Test and Trace" scheme. OWL members were warned about this possibility as far back as May this year. Test and Trace presents a perfect opportunity for criminals to obtain personal and financial details by deception, since people know they could get an unexpected call if they have been named as a contact. Genuine Test and Trace contacts will be via phone, text or email, and will request only limited personal information, then you'll be asked to sign into the NHS Test and Trace website. Beware if you're asked unnecessary questions, as the contact could be a scam.

The change in the rules about TV Licences for the over 75s has provided another scam opportunity, and a number of people have had phone calls and emails about this. The TV Licensing Authority will send a letter to everyone who has had a free licence, advising them how to pay or to continue with a free licence (for people receiving Pension Credit). Wait for this letter before taking any action, but if you do have a query you can call the TV Licence help-

line number 0300 790 6117.

Some Welwyn OWL members have recently been targeted by a crafty scam purporting to be from the household product breakdown insurance company Domestic and General, and advising them that their breakdown insurance is due for renewal. These calls are scams that have nothing to do with D&G. It is possible that similar calls may be made in the name of other appliance insurers.

Although there are some new scams around, the old ones are still with us! There have been a number of tax scams, including messages advising people that they may be arrested. Although this sounds quite humorous, it could be disturbing to lonely and vulnerable people. Please forward tax scam emails to phishing@hmrc.gov.uk and other types of scam emails to report@phishing.gov.uk.

John Mitchell and Valerie Richards
www.owl.co.uk/herts

CREATIVE PLANTING DESIGN & GARDENING SERVICES



- New garden planting designs
- Garden redesign & development
- Plant advice & recommendations
- Planting services
- Seasonal pots & containers

Please call to arrange a garden visit & to talk through your ideas & requirements.

Katie Mitchell 07535 878033 twigsandbloomsuk@gmail.com

NICHOLSONS

CHARTERED ACCOUNTANTS

1st Floor, Bridge House
25 Fiddlebridge Lane
Hatfield
Hertfordshire AL10 0SP

Tel: 01707 630880
Fax: 01707 630899



TENNIS FOR ALL

NINE COURTS, EIGHT FLOODLIT
TWO WINTER INDOOR COURTS
FABULOUS 4 COURT KIDS ZONE
CARDIO TENNIS

WELL APPOINTED CLUBHOUSE AND BAR
SOCIAL AND COMPETITIVE TENNIS
FULL-TIME COACHES ALWAYS AVAILABLE
PLUS! TABLE TENNIS with LEAGUE MATCHES

MEMBERSHIP: 01438 816800

COACHING: 01438 717990

www.welwyntennis.co.uk

Welwyn Tennis Club
Ottway Walk
Playing Fields
AL6 9AT



ALLWOOD

Automobiles

Quality Cars At Affordable Prices - Over 80 cars in stock online
Branches in Welwyn Garden City & Waltham Cross

We Buy Your Car Call Us Today
For A Valuation

Your Local & Independent Car Buyer
Specialists in Classic Car buying

www.Allwoodautos.co.uk & www.tewincars.co.uk

Mobile: 07747 604 760

WELWYN NATURAL HISTORY SOCIETY

I HOPE – IS IT POSSIBLE? - I DON'T KNOW – DOES ANYONE KNOW?

Hasn't it been difficult to arrange things? We have no idea what will happen tomorrow, next week and as for next month.... it's a virtual unknown. However, at the end of September, and after I have sent this in to the editors, we should have had our first meeting for yonks with David Johnson telling us all he knows about eels – a very fishy subject! That will, hopefully, have been in the large hall at the Civic Centre so that we could all keep the required distance away from each other – probably not because we smelled of fish!



But now, in October, on Wednesday evening 28th, we find that the Civic Centre is already booked... a bit of lateral thinking is required and I am absolutely delighted to say that we hope to be meeting in St. Mary's, not in Church House, but in the back part of the church nave. How very kind of everyone to let us do this! The speaker will be Harry Bott who farms at Benington and he has a fascinating talk lined up - "How Farming has changed

through the Years".

The first thing to do is to check that this talk will be taking place!! There are two places to look:

1. Our website: welwynnaturalhistorysociety.co.uk
2. Our Facebook page: Welwyn Natural History Society

Of course we will still have to be careful about social distancing and there is a limit to the number of people we can have present, so I would be most grateful if you could book in by emailing richdarby@aol.com or leaving a message on 07583 696448.

Judith Watson

JULY/AUGUST QUIZ ANSWERS

FLOWER QUIZ

1	A bovine mishap	Cow Slip
2	a very proper flower (8)	Primrose
3	Sounds like a herd of sheep (5)	Phlox
4	Kept in a warehouse (5)	Stock
5	This saves you (5)	Thyme
6	Sad sight at a dance (10)	Wall Flower
7	You will drop this quickly (3,3,5)	Red Hot Poker
8	Vulpine hand warmer (8)	Fox glove
9	Juggled spittle (6)	Salvia
10	Hard working girl (4,6)	Busy Lizzie
11	Avalanche (8)	Snow drop
12	Turn A into E to get bike riders (8)	Cyclamen
13	Delectable Bill (5,7)	Sweet William
14	Kentish campanologists like these (10,5)	Canterbury Bells
15	Country of car drivers (9)	Carnation
16	Sugary pulse (5,3)	Sweet pea
17	Followed by Kings (4,2,9)	Star of Bethlehem
18	I hear I'm on my way here almost (9)	Amaryllis
19	Mythical beast chased by a ginger biscuit (10)	Snap dragon
20	Parisian dancers and railway have this in common (8)	Bluebell
21	Hello Cynthia (8)	Hyacinth
22	Fancy fierce feline (9)	Dandelion
23	Canine stood up (3,4)	Dog rose
24	Saffron Factory (6)	Crocus
25	Avaricious mother's advice to daughter (8)	Marigold
26	She never goes into the hills (4,2,3,6)	Lilly of the valley
27	Said to a departing sweetheart (6,2,3)	Forget me not
28	Sanguineous sign of a shattered heart (4,4,8)	Love lies bleeding
29	You are in it when you are well (4)	Pink
30	Blue or green dilly dilly (8)	Lavender
31	Grandad needs a shave (3,4,5)	Old mans beard
32	Flower for an Archangel (10, 5)	Michaelmas daisy

JULY/AUGUST QUIZ ANSWERS

33	Sounds like my home is losing water (5,4)	House leek
34	Nancy or Mary (5)	Aster
35	Looking for an Orc? Hidden one here (6)	Orchid
36	Erica's alias (7)	Heather
37	Foggy passion (4,2,1,4)	Love in a mist
38	Flying around in Eden (4,2,8)	Bird of Paradise
39	Not a sour pasture (11)	Meadow sweet
40	Sounds like neither past not present (7)	Fuchsia

WORD SEARCH

S	U	N	S	H	I	N	E							
E		T		E	P	A	D	D	L	I	N	G		
S		H			A		G		P					
O	P	U		S		S	N			I		H		D
R	A	N		L		H	I				C			E
	R	D		A		O	R	D		A		N		C
T	A	E	H	D		R	E		E			S	I	K
	S	R		N		T	T	B				U	C	C
	O	S		A		S	A			N		N	E	H
	L	T		S			W		E		E	H	C	A
F	L	O	W	E	R	S		E			V	A	R	I
		R					R				A	T	E	R
		M				C					W		A	
		S			S						T		M	
				N							A			
		S	U	N	T	A	N				E			
		S	W	I	M	S	U	I	T	S	H			

SUNSHINE	ROSES	PICNIC	THUNDERSTORMS	SANDALS
SUNTAN	FLOWERS	ICECREAM	WATERING	SEASIDE
SUNSCREEN	HEAT	PADDLING	SHORTS	DECKCHAIR
SUNHAT	HEATWAVE	BEACH	SWIMSUITS	PARASOL

JULY/AUGUST QUIZ ANSWERS

1 CW by EBW	Charlotte's Web	E B White
2 HPATPS by JKR	Harry Potter and the Philosopher's Stone	J K Rowling
3 TG by JD	The Gruffalo	Julia Donaldson
4 TTWCTT by JK	The Tiger who came to tea	Judith Kerr
5 TLTWATW by CSL	The Lion the Witch and the Wardrobe	C S Lewis
6 TH by JRRT	The Hobbitt	J R R Tolkien
7 TCITH by DrS	The Cat in the Hat	Dr Seuss
8 WTP by AAM	Winnie the Pooh	A A Milne
9 M by RD	Matilda	Roald Dahl
10 TSG by FHB	The Secret Garden	Francis Hodgson Burnett

WELWYN PARISH COUNCIL



Although the Parish Council doesn't hold formal meetings of Councillors and interested members of the public in August, we have been busy liaising with Hertfordshire County Council over the one way system and the barriers, the proposed planters and planning for the Neighbourhood Plan survey.

WELWYN PARISH COUNCIL (Cont)

Planters

I am writing this article at the end of August. We hope that by the time you read it the village will have taken delivery of the promised planters. The plan is for these to be in place for the next twelve to eighteen months when, hopefully, the Government will have been able to relax the rules on social distancing. At the end of this period we will then need to decide if we wish to keep the planters. Looking at other villagers/towns, planters can make the areas very attractive. Obviously, the big question will be how they are maintained, watered and replanted when necessary. None of us wants our village to have planters that have not been looked after and left with dying plants and used as litter bins. We have some ideas, for example installing our own watering system and Caroline, our new Clerk, has been contacting companies who will do the watering and maintenance for us as contractors. We will also be talking to Garden Centres. As always any ideas are welcome so please contact Caroline by email www.welwynpc.org.uk .

Shopping

In the last magazine Jane Carr asked people to start shopping in the High Street again. I recognise that for some, who haven't been out for several months, this is a big step. But Jane is right, unless we help to kickstart the businesses, our village will die. I have found that all of our traders have worked hard to make their premises as safe as they can be and, as always, customers can expect a friendly welcome. I have enjoyed being able to shop/eat in the village again as my credit card bill will confirm!

Venues

Unfortunately, we are not able to open all our venues as we have to follow Government guidelines. Susan, our Administration Officer, has been talking to our hirers and, as I write this article, we are planning to open the large hall in the Civic Centre, as we can safely have a separate entrance and exit. One hall in the Whitehill Centre will also be opened. As soon as guidelines allow we will open all our venues again.

Please stay safe and look after each other.

Marj Otty
2020/21 Chairman
Welwyn Parish Council

VILLAGE NEIGHBOURS



During ten weeks' clapping for the NHS we got to know the neighbours at our end of Mill Lane, indeed it feels quite a loss not to meet them outside each Thursday.

This reminded me of the neighbours we had on first moving to number 5 in 1983. As I contemplated our new front garden a very young Howard Hill bounced across from the house opposite. "You should grow potatoes there," were his surprising first words. The rest of our immediate neighbours were more elderly and they too were somewhat eccentric.

Doris Baron was next door at number 7. Born in 1899 and standing well under five foot, she was quite formidable. Never slow to give her opinions, I soon discovered she disliked yellow flowers when I planted daffodils. She loved birds, so hated cats. In her opinion a cat should only go out on a lead. She put barbed wire on our dividing wall to keep our cat out.

Doris's brother George farmed at Lockleys. He would drive slightly unsteadily to visit his sister in his ancient Rover. Their shouted conversation was audible in our house. Afterwards Doris would stand anxiously waving him off towards Church Street: once he'd disappeared around the corner she sighed with relief. Obviously, she thought Mill Lane was the most dangerous road for him to negotiate.

VILLAGE NEIGHBOURS

Yet Doris could be very kind; she and her other neighbour Mary shared their mid-day meal and also cooked for Bill who lived opposite at number 16. Each day Doris would set off across the road carrying a covered plate of lunch to Bill.

A decade later, Beryl Turner at number 18 was regularly carrying lunch across the road to Doris, then well into her nineties (hopefully when we get to that age someone will trot across the road with our lunch...).

Beryl had been housekeeper at the pharmaceutical company at The Frythe. She had also been in the Army and, at first, I found her fairly terrifying... later on I discovered her to be the kindest of friends and still miss her. She died in 2006.

Susanne and Tom at number 3 had arrived in Welwyn from Africa. They kept the flags of Southern Rhodesia inside their hall. Tom, a retired engineer, spent hours tinkering under the bonnet of his once top of the range but now rather elderly car to keep it roadworthy, even removing a fuel pump he deemed unnecessary. He also kept a pickaxe handle in the boot, in case he was attacked.

Opposite at number 4 was Evie Kingham, an elderly lady living in the house where she'd been born. Her family kept shop at number 2. She remembered that the pony and trap could go through to the back in her grandparents' day. This was the sweetshop until a few years before we arrived.

During the 1980s Mrs Sinclair moved to number 2, by then a pretty house. This lady was very unhappy, more than once she told me she didn't like Welwyn (why, I wonder, did she stay?). She felt cold and uncomfortable in parts of her house, especially on the stairs. After carrying out investigations she told me that she had discovered that her stairs were where the gallows had stood in the 13th century; a young girl had been hanged here. I have no idea of the veracity of this, except that after an exorcism the house became very comfortable.

A century ago, it wasn't uncommon for families with 9 or 10 children to occupy a small Mill Lane cottage. But when we had an influx of young couples with new babies replacing our older neighbours, sadly they soon moved on once the children grew. After that several cottages were sold as buy-to-lets, and we often never met the short-stay renters.

Then everything changed when the virus arrived. As we clapped outside, we finally met all the lovely people who are our neighbours today. I do wonder though, is it now us who are seen as the eccentric old folk?

Vernonne Allan

WELWYN SCOUTS

We are very pleased to be able to include two reports from Welwyn Scouts on how they have been using their ingenuity to continue Scouting activities in Welwyn.

A report from Andy Trotter the Group Chairman of the 1st Welwyn Scout Group

Like everyone else, back in March we had to stop meetings, and for about a month our youngsters were deprived of their get togethers at the scout hut, or out and around the district

Then we were told that virtual meetings were OK, and we decided to start them on Zoom, for beavers, cubs and scouts, and a few weeks later those nice people at Zoom gave all 5,000 Groups around the country free Zoom subscriptions!

The leaders put their thinking caps on, and gradually we began to offer the youngsters all sorts of activities that, with their parents help, they could do at home whilst their leaders Zoomed with them (a new verb that has entered the worldwide vocabulary as we all got used to such technology!)

Great fun was had by all, and I think it gave parents an insight into what is involved to set up each week's meetings, even though they were dealing with one or two young people, rather than the 24-30 plus the leaders usually deal with.

Tony Wosley's article on page 32 describes some of the activities we have managed to organise.

One mum said to me that her scout had said after one meeting that it was the best most fun meeting he had ever enjoyed! We are not sure whether having the leaders separated from him down the Zoom line had any bearing on that!

The whole scout movement has embraced Zoom get togethers and now over 20,000 scout leaders "meet" with the people at Scout HQ to be briefed on our "readiness levels" which via the government and the National Youth Council, define to what extent youth organisations can begin to interact with their members.

We had moved to "Amber" in August, meaning we could meet outside, but in "bubbles" restricted to 15 people including leaders, which dou-

CHIROPODIST/PODIATRIST

Registered with HPC CH 24414

Lynda A. Mountbatten

FSSCh MBChA
Dip Pod Med BSc Pod Med

Surgery (Datchworth) and Home Visits
01438 817073



APPLE REMOVALS

Domestic/Business moves/Storage
Packing Services

Tel: 01438 821215 or 01707 372404

www.apple-removals.co.uk



Welwyn St Mary's

Church of England Primary School

"Believe and Achieve"

Outstanding

Ofsted September 2013
Local Authority 2014-19

Excellent

SIAMS 2019

01438 714169

15 London Road, Welwyn, AL6 9DJ

Email: admin@welwynst-marys.herts.sch.uk

Website: www.welwynst-marys.herts.sch.uk



Chic Beauty of Welwyn

For relaxing treatments

Bring this advert and receive £5 off any treatment.

Cannot be used in conjunction with any other offer - No monetary value.

We offer a wide variety of treatments by qualified and insured technicians carried out in tranquil surroundings-
CACI, Environ Facials, Collagen Stimulation Therapy, Cool Peels, Luxury Spa Facials, Dermalogica Prescriptive Facials, Manicures & Pedicures, Gel Overlays,
Eyebrow Shaping, Eyebrow and Eyelash Tinting, Eyelash Lifting, Individual Lash Extensions, Spray Tanning, Massages including Warm Oriental Bamboo & Hot & Cold Stones, Ear piercing,
Hair Removal (using strip wax/hot wax/threading), Electrolysis (including hair removal, skin tag, thread vein & milia removal)
Reflexology

We also have a selection of Environ, Jane Iredale, Advanced Nutrition Programme, Dermalogica, OPI, Luxury Spa Products & Tanning products available to purchase.

Phone - 01438 840333

34b High Street, Welwyn, AL6 9EQ

Jenny Junior Interiors

Transforming your country home
for modern day living, from concept to
completion.

We take the worry away.

Kitchens & Bathrooms, Garden rooms,

Living rooms, Bedrooms.

Curtains, poles, blinds

Designer fabrics and wall coverings

Bespoke and fitted furniture and
upholstery

Flooring, lighting, art and accessories

Consultation in your own home.

Tel: 01707 276343 or Mob: 07947 711597

www.jennyjuniorinteriors.co.uk

jenny@jennyjuniorinteriors.co.uk

WELWYN SCOUTS

Continued from page 28

bled the number of leaders we need to run a meeting of 24 in two “bubbles” as the leaders cannot run more than one “bubble”!!

As I write in mid September, possibly now to “Amber Plus”, which may mean “bubbles” of 30 outside (easier for us to cope with as a whole section and its leaders can meet) and possibly to inside meetings of 15!!!

Like schools we are feeling our way with what is permitted, and how we can work with those rules to get back together with the youngsters in a meaningful way.

We hope that this side of Christmas we may be able to meet with whole sections inside, as the weather will make outside meetings increasingly difficult.

Can I please ask that you all give some thought as to whether you could join 1st Welwyn as a parent helper, or as a uniformed leader.

We started as 18 youngsters and 2 leaders in October 2014, and now 80 plus boys and girls in beavers, cubs and scouts who are led by 15 leaders and many parent helpers, who offer a fun, exciting and character building range of activities. These lead to 60 plus badges at each level, and could give youngsters a chance to attend UK and European camps, or even the next World Jamboree in South Korea, if Covid can be put back in its box and we can all get back to normal.

We offer on the job training with experienced parents and leaders, and I guarantee you will be inspired and fulfilled when you see the excitement and fun given to the youngsters e.g. when a beaver sits around a camp fire looking up at the stars on their first beaver camp

Andy Trotter
Group Chairman 1st Welwyn Scout Group
Mobile 07580942319
email a.trotter@btinternet.com

Continued on page 32

Personal, caring and independent.

The complete funeral service

24 hour service
•
Private Chapels of Rest
•
Memorial Stonemasons
•
Funeral Plans
•
Own Crematorium

*Serving the local community
for ten generations*

WELWYN GARDEN CITY
01707 390018

WELWYN
01438 714686

AUSTIN'S

FAMILY FUNERAL DIRECTORS

www.austins.co.uk



WELWYN GARDEN CITY GOLF CLUB



... the best kept course in Hertfordshire

Your Local Members' Golf Club

- **Fun, friendly, sociable club, offering competitive and social golf with a busy social calendar.**
- **Full Membership under £28 per week.**
- **5 Day Membership less than £21 per week.**
- **No Societies at weekends • Social & Corporate Membership available.**

WGC Golf Club, Mannicotts, High Oaks Road, WGC AL8 7BP

Contact: David Spring, General Manager

t 01707 325243 e david@wgccgc.co.uk w www.wgccgc.co.uk

WELWYN SCOUTS

Continued from page 30

A report from Tony Worsley the Group Scout Leader of the 1st Welwyn Scout Group

Scouts is all about getting out there, doing things and learning new skills and nothing to do with video screens. So, lockdown hit scouting hard. How do you replace nights at Harmer Green running around in the dark (as we had done just before it hit) whilst everyone is at home? The answer (sort of) is Zoom. But you can't just have 20 restless scouts hooked up to a video call - the noise alone is impossible! So, we have run a variety of activities and games and even had a speech from an inspirational Para-triathlete.



Twenty Scouts on a “zoom” meeting



Using the tablet wifi camera to show what is cooking

Most popular was a fantastic escape room game devised by another scout pack and a cooking evening where the scouts made and then cooked burgers. To enjoy more of the outdoors, we also had an orienteering session around the village. I think all the scouts slept well after that! In July, the Scouts organised 'the Great Weekender, a night of camping at home and we had 17 scouts and 2 leaders sleeping in their gardens. We have also encouraged badge work at home, with some doing so very enthusiastically and one completing his Chief Scout's Gold Award, a really remarkable achievement.

Tony Worsley
Group Scout Leader



Locksmith SERVICES

YOUR LOCAL APPROVED LOCKSMITH
CALL US FIRST FOR BEST PRICES

FULLY TRAINED LOCAL LOCKSMITHS
(WE ARE NOT A CALL CENTRE)

- Lock Outs • OAP Discounts • Boarding Up •
- Security • Consultants • Police Vetted •

Fast Response Times -
Usually within Half An Hour
 24 Hours 7 Days A Week No Call Out Charge



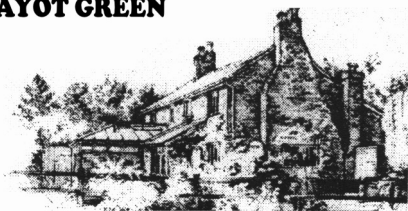






Phone Welwyn 01707 515244

CHRISTMAS COTTAGE BED & BREAKFAST AYOT GREEN



- Charming 300 year old cottage on a village green overlooking Bocket Hall golf course.
- Great pubs plus food five minutes walk away
- Summer swimming pool and Jacuzzi
- En-suite rooms, LCD TV, Free WiFi

01707 321489 - Vernon & Jane Sherriff

www.christmascottagebedandbreakfast.co.uk

Alice
Coralie
Glyn Homes Trust

We are a local Almshouse Charity with
 14 properties in
 Turmore Dale and Hyde Valley
 Welwyn Garden City

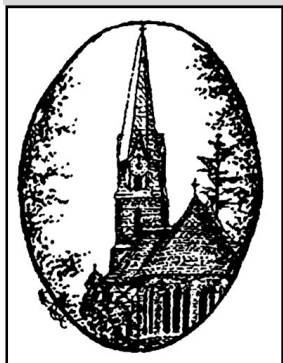
If you are over 60 and looking for accommodation,
 please contact our Managing Agents:

Welwyn Garden City Housing Association on:

01707 390044

We may be able to help

NEWS FROM AYOT ST PETER



Our new pattern of services is now well established. The first two services of the month continue to follow the Book of

Common Prayer with readings from the King James Bible. In the second half of the month a modern translation of the Bible is used and services follow the Common Worship liturgy. Average attendances are around the same as pre-COVID lockdown, but the 'modern' services are achieving their aim of attracting new members to our congregation.

In July we had a fund raising produce stall in the churchyard. This was highly successful with everything on the stall sold out in just over two hours. Our thanks to all those who donated produce and came along to support the venture which raised a very impressive £530. As with the sale of jams and chutneys at the annual Heritage Open Day, the proceeds of the sale were shared between church funds and the Hertfordshire Air Ambulance charity.

Talking of church funds, the project to provide the church with a toilet is making serious progress. The composting toilet will be located next to the west-facing wall of the vestry.

So far, just over £2,800 has been raised towards the cost of the project which is expected to be around £8,500. Although adopting a flat roof, as opposed to pitched roof, could save some £800, our preference is for the pitched option which will be more in keeping with the architectural style of the church.

With this encouraging progress on fund raising, the next stage is for the Rector to seek a faculty for the works. A 'faculty' is permission from the Diocesan Authorities to make alterations to a church.

Readers may have seen reports in the press of a row at a church over the removal of pews and their replacement by chairs, which seemed to have come as a surprise to the congregations. Those of us familiar with such issues may have wondered whether there had been an application for a faculty before the radical change was announced!

RF

De Vito's

Tiling, Decorating, Bathroom and Kitchen Fitting

- Wall & Floor Tiling
- Kitchens, Bathrooms & Conservatories
- Tanking (Waterproofing)
- Interior & Exterior Decorating
- Bathrooms & Kitchens Fitted
- Undertile Heating
- Any pattern or size tile

Fully Insured Work Guaranteed
Free Estimates

Phone Michael De Vito on
07789861004

e-mail: mike.devito@ntlworld.com

NEED HOME REPAIRS OR DECORATING DONE?

We provide a high quality service covering repairs, renovations, general home maintenance and painting & decorating services for both inside and outdoors.

- ✓ LOCAL & REPUTABLE
- ✓ THOROUGH & PROFESSIONAL
- ✓ RELIABLE & TRUSTWORTHY

Call David on: 07543-689328



NORTH HERTS
HOME MAINTENANCE

Welwyn Florist

Est 1970

Retail & Business Florist

29 High Street, Welwyn, Hertfordshire. AL6 9EE

☎ 01438 716569 ✉ info@welwynflorist.co.uk

🐦 @welwynflorist 📘 theoldwelwynflorist



small flowers
eflorist

www.welwynflorist.co.uk



Medals Wanted

Local collector & researcher pays highest prices for all medals: military or civil, groups or single items. Also buying other militaria and civil aviation items.

Tel: 01438 - 811657

Richard Parsons

*French Polisher
& Furniture Restorer*

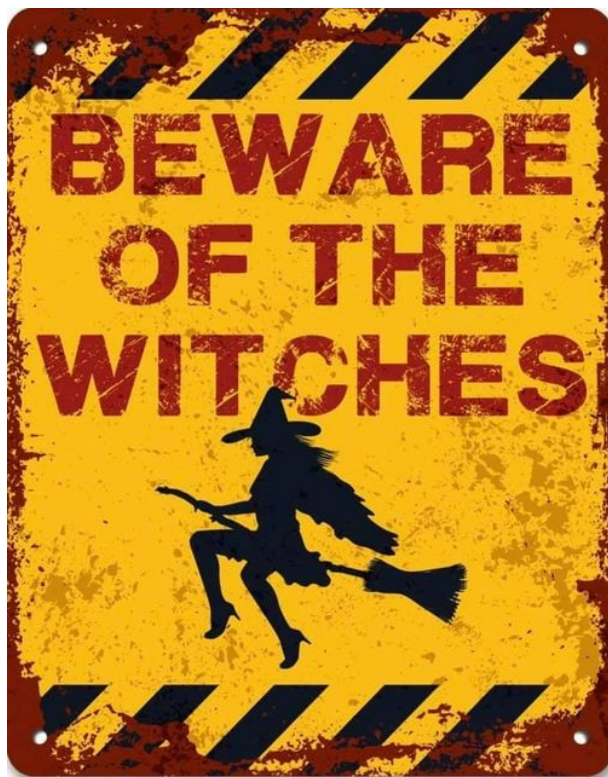
*Antiques - Modern Furniture -
Pianos - Full Repair Service*

27 ST MARTINS ROAD

KNEBORTH (01438) 812200
HERTS. SG3 6ER 07946 422151

Hallowe'en in Welwyn

There is a rumour that a 'Frightful Float' is to descend on the village on Saturday 31st October for Hallowe'en. This horrifying ghostly float will be scaring you all into donating to the Welwyn Festival Charities. You have been warned! We understand the ghostly source, whose technical capabilities are second to none, will update the Welwyn Village News Facebook page with more details nearer the time.



SWEEPSMART Chimney Sweep

- Sweeping all types of Flues •
- Chimney CCTV Inspections •
- Chimney Leakage Tests •
- Bird Nests Removed •
- Pots and Cows Fitted •
- Clean and Friendly Service •

01438 553 023

www.sweepsmart.co.uk



OmerCare
HERTFORDSHIRE HOME CARE
local care for local people



A family-run business providing home care services for adults and children in Welwyn

For more information contact Karry Omer on
01438 820999 or email
karryomer@omercare.co.uk

Our Services Include

- ✓ Personal Care & Companionship
- ✓ Preparation of meals and shopping
- ✓ Cleaning and Ironing
- ✓ Trips out to restaurants, cinema etc.
- ✓ Sorting of documents, photos etc.
- ✓ Mental stimulation by means of card games, memory boxes, memoirs etc.

All our staff are CRB checked and trained to our high standards.

Very flexible service at competitive rates.

Call us now to arrange for our Care Manager to visit you to discuss your requirements.

www.omercare.co.uk

01438 820 999 / 07557 889 037



Your local, friendly computer helper

- New computers, laptops, printers •
- refurbished computers • anti-virus
- wireless networks • home tutorials •
- installations and setup • troubleshooting •
- upgrades • security • PC health check •
- repairs • broadband installation

Phone 07768 055906

Email: info@pcassetsservices.co.uk

www.pcassetsservices.co.uk

STUDIO C ARCHITECTS LTD

Providing architectural design services that respond to your needs

- * FREE CONSULTATION
- * PROFESSIONAL & PERSONABLE APPROACH
- * PLANNING & BUILDING REGULATION APPLICATIONS
- * TENDER & CONTRACT ADMINISTRATION
- * NEW BUILDS & EXTENSIONS
- * ALTERATION, RENOVATION & REFURBISHMENT



Sarah Coughlan

BA (Hons) Arch Pg.Dip(Plym) RIBA

(E) sarahcoughlan@studio-c-architects.com

(W) www.studio-c-architects.com

(T) 01920 413302

STUDIO C ARCHITECTS LTD
architectural design services



WOOLMER GREEN PARISH COUNCIL

Woolmer Green Local Plan news

Local Plan hearings took place in July and August and the Parish Council's planning consultant attended to put the case that developing the Green Belt cannot be justified when previously developed land is available. A number of issues were discussed including the setting of the Grade II listed Payne's Farmhouse, flooding and drainage and infrastructure. All of these issues were considered and it was concluded that they could be overcome. In discussion on the Green Belt, it was noted that development would be required to fulfil the WHBC housing requirement. In concluding the discussion of the Green Belt site, the planning inspector said that, in principle, he saw no reason why it should not be developed.

Woolmer Green Village Hall and Playgrounds



The playgrounds reopened a few weeks ago with some new notices to remind parents and children to keep safe during Covid-19. It has been good to see them back in use and children and teenagers using the hall grounds for games.

The Village Hall reopened on the 1st of September and the hall staff returned to work after a few months on furlough. Government advice now enables regulated activities including sport, exercise and dance classes to take place in community halls, so we welcome all these regular hirers back.

The Farmers' Market reopened at the end of June as an outdoor market on the playing fields outside the Village Hall and it will be open on the 4th Sunday of every month.

The Parish Council has lost a considerable amount of income while the hall has been closed and hopes that the losses will be less severe for the rest of the year.

If you are interested in hiring the hall please contact the Clerk by phone or email clerk@woolmergreenpc.org.uk.

Sarah Hall

Woolmer Green Parish Council
sarah.hall@woolmergreenpc.org.uk

WOOLMER PEST CONTROL

Hertfordshire

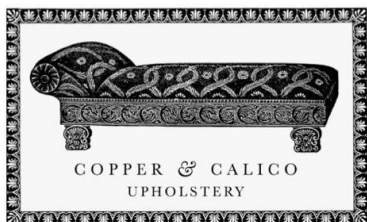
All Pest Control Work Carried Out
Father & Son business

07773 453380 Conor

0778 714 8008 Malachy

Email: woolmerpestcontroltd@gmail.com

www.woolmerpestcontrol.co.uk



COPPER & CALICO
UPHOLSTERY

Bespoke antique and mid-century furniture upholstery
Welwyn workshop Tel: 01438 553099
www.copperandcalico.co.uk



KATE WHITELAND
FITNESS PHYSIOTHERAPY

SPORTS INJURY CLINIC
HYDROTHERAPY
PILATES

Sports Injuries	Whiplash & Headaches
Back Pain & Neck Pain	Joint, Nerve & Muscular Pain
Arthritis & Tendonitis	Post – Op Rehabilitation
Work Associated Pain	Pregnancy related Pain

Telephone 07956 372891

Email katewhiteland@gmail.com

www.fitnessphysio.co.uk

KATE WHITELAND BSc (Hons) MSc MMACP MCSP

Member of the Health Professions Council

The Therapy Rooms, Natural Health,

36 Wigmores North, Welwyn Garden City,

Herts AL8 6PH



LOCATED IN WOOLMER GREEN

*Offering high quality lash and
nail treatments using industry-
leading products, individually
tailored to each client*

WWW.INSIGHTBEAUTY.CO.UK

07718 635 500



[insightbeauty](https://www.facebook.com/insightbeauty)



[insight.beauty](https://www.instagram.com/insight.beauty)

Peter Scoats
Carpenter & Builder
for
All building projects
&
Property maintenance

Tel : Welwyn 01438
715986

07962 318840

scoats007@gmail.com

FRIENDS OF DANESBURY & QVM HOSPITAL

As mentioned in last month's article, we scheduled the Grand Re-Opening of our Welwyn shop on **Tuesday 18 August**. As you can imagine, having to make sure that your shopping experience with us is Covid-secure meant a lot of changes both to our processes and to the physical layout of the shop. A Perspex screen is in place at the till, and hand-sanitiser is available for use as you enter the shop, as well as a host of other changes. A copy of the risk assessment that we carried out is available on our website. We hope that you will come and visit us now and help us to support the NHS in Welwyn and beyond.

The shop window has been dressed by Georgia Shaw and her husband, and the photo below shows the imaginative display that was created for the sale of toys that we held on 1st August 2020.

In addition to the physical shop, we are also now running a virtual shop on eBay.

Take a look and see what is on offer and make a bid, visit the shop at:

<https://www.charity.ebay.co.uk/charity/FRIENDS-OF-DANESBURY-AND-QUEEN-VICTORIA-MEMORIAL-HOSPITAL/3150501>

Nothing can prevent us from continuing the work that we do to support the NHS, and over the past few weeks we have provided:

- * a pressure washer to allow staff to wash down wheelchairs and other equipment;
- * clocks for the wall of each patient ward in the QVM
- * radios for use by patients

We hope that you will continue to support us.

*Friends of Danesbury and Queen Victoria Memorial
Hospital*

*Danesbury Neurological Centre
School Lane, Welwyn, Herts AL6 9SB
Tel: 01438 840514*

*E mail: daneshburyqvm@btconnect.com
www.daneshburyqvm.co.uk
Facebook at Danesbury Shop Welwyn*





nikki lewis
photography

www.nikkilewisphotos.co.uk

Tel: 07973 135330

nikki@nikkilewisphotos.co.uk

Insta: @nikkilewisphotos

Twitter: @nikkilewisphoto

Facebook: @nikkilewisphotos

nicki the cat feeder

Registered Veterinary Nurse

Fully Insured - DBS Checked

07976 488603

nickithecatfeeder@gmail.com



KNEBWORTH ELECTRICAL

Electrical Engineers & Contractors

REPAIRS TO:

- DISHWASHERS
- WASHING MACHINES
- TUMBLE DRYERS
- OVENS

Tel: (01438) 812236

Mobile: 07778 035182

SAMARITANS

**Talk to us any time
you like, In your own
way, and off the
record - about whatever's getting to you.**



116 123 Free call



jo@samaritans.org



samaritans.org

When the body distorts ...

Back, neck and shoulder pain
Pain, discomfort and stiffness in joints
Migraine
Muscular aches
Sports injuries
Arthritic pain

WELWYN CHIROPRACTIC

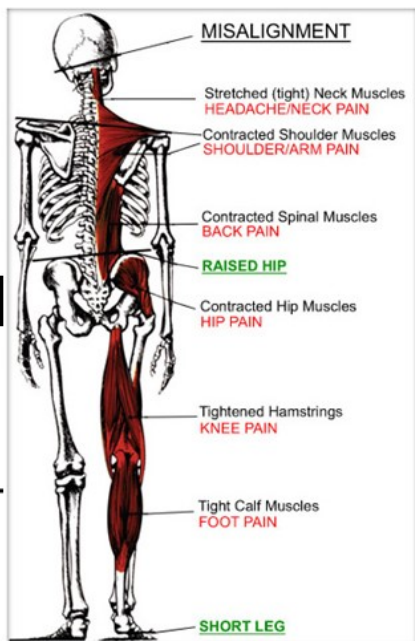
Wellingham House, 15 Church Street
Wewlyn, Herts AL6 9LN

01438 717865

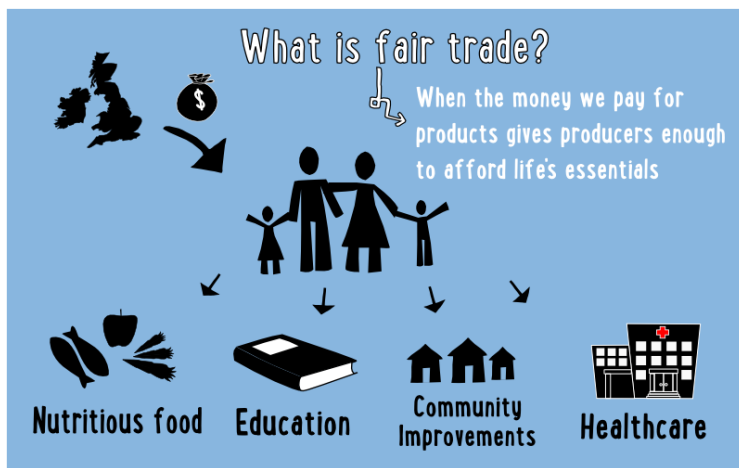
www.welwynchiropractic.co.uk

**Call To Schedule A
Complimentary Consultation.**

It's A Conversation, Not A Commitment.



FAIRTRADE IN LOCKDOWN



Like everyone else, St. Mary's fairtrade stall and café had to reluctantly close its doors at the end of March. Much to our delight, we were able to continue placing orders from our supplier, Traidcraft, even when it was nigh on impossible to get a supermarket delivery slot, and so we could continue selling groceries to our local customers, delivering most of them on the "daily walk"....

Traidcraft reported that orders almost tripled overnight, selling six months' worth of toilet roll in a week, and stock of fair trade pasta and rice selling out nearly as fast. This boost in sales came from a new influx of online direct customers, who have now discovered the wonderful journey of fair and ethical consumerism.

Fortunately, we have now reopened in Church House on Saturdays from 10am to 11.30am. This is the situation at the time of writing, though of course we're mindful that things may change again.

Traidcraft's new Autumn/Winter catalogue is filled with sustainable stationery, 100% recycled glassware, fairly traded homewares, ethical fashion, vegan cleaning products and of course fair trade food and drink. Copies are available from the Saturday stall, or you can look online at www.traidcraftshop.co.uk

For more information or to place an order, contact Maggie Varco by email on: margaret.varco@btinternet.com

Conveyancing
Wills - Probate
Lasting Powers of Attorney



Welwyn-based firm of Solicitors

Evening Appointments - Home Visits

Tel: 07368 260469

Email: edmondsons.solicitors@btinternet.com



Regulated by the Solicitors Regulation Authority under SRA No 325616



0330 22 33 556
Based in Datchworth

- ▣ 1-8 Passengers
 - ▣ Fully Wheelchair Accessible
 - ▣ Huge Luggage Capacity
 - ▣ Free WIFI
 - ▣ Credit Cards Accepted
 - ▣ Airport Transfers
 - ▣ Golf Parties
 - ▣ Events
 - ▣ Weddings
 - ▣ Races
- www.abbotstaxis.co.uk
paul@abbotstaxis.co.uk

FP Mortimore
Web Design & Development

Website Design

Friendly and professional web designer supporting local business

07976 653329

www.fpmortimore.co.uk

LOOKING GOOD GARDENS



*ALL MAINTENANCE
& GARDENS CAPES
Free Estimates and Advice*

Phone Darren
01438 840242

3 Broomfield Gardens
WELWYN, HERTS, AL6 9DN

Church Notice Board

Worship has now resumed in our churches.

*Please continue to follow the social distancing guidelines,
use of hand sanitiser and the wearing of face coverings is mandatory, unless you are exempt.*

Details about Virtual Church, which continues at 9.30 am each Sunday, can be found at:

www.welwyn.org.uk

Sunday Services

	ST MARY'S - Welwyn
8.00 am	Holy Communion
9.30 am	Parish Communion / Junior Church
6.30 pm	Evensong (2nd , 4th & 5th Sundays)



	ST MICHAEL'S - Woolmer Green
11.15 am	Parish Eucharist (1st & 4th Sunday)
	Family Service (2nd Sunday)
	All Age Eucharist (3rd Sunday)
	Morning Prayer (5th Sunday)



Weekday Services

ST MARY'S - Welwyn

Current week's services are on the notice sheet
in church and on the website www.welwyn.org.uk

Tuesday	8.00 am	Morning Prayer (St Mary's)
Wednesday	9.00 am	Morning Prayer (St Mary's)
Wednesday	9.30 am	Holy Communion (St Mary's)
Saturday	9.00 am	Parish Prayers (St Mary's)

ST GILES - Codicote

Tuesday	8.30 am	Morning Prayer (St Giles)
---------	---------	---------------------------

Common Worship used at all Communion Services except where stated

Children

ST MARY'S - Welwyn

3.30pm Craftea (see Diary on back cover for dates)

Confessions

By arrangement with the Clergy.

The Ministry of Counsel and Absolution is available to anyone
who seeks it at any time.

Clergy Surgery Hour

Saturday 10.00 am to 11.00 am

A member of the team will be available in church for any
enquiries. Mainly intended for Baptisms or Weddings but is
not exclusively restricted to those matters.



National Pub & Bar Awards East of England Winner 2019

Open for Breakfast, Lunch & Dinner 7 days a week with 13 guest rooms & private function room. The award winning pub offers a seasonal A La Carte menu & an impressive selection of beer, gin & cocktails

- Set Menu, 2 courses £15 | 3 courses £19 -
- £5 Cocktail List 5-7pm every day -
- Booze & Buns Tuesdays -
- Monthly quiz -
- Regular Wine & Supper Club -



01438 715353



| www.whitehartwelwyn.co.uk



| @thewhitehartwelwyn

2 Prospect Place, Welwyn, Herts, AL6 9EN



Fabulous food for any occasion

Maria Sherriff
Welwyn Village - 07919 090419
mariasherriff@yahoo.com



Your Local Independent Audiologist

- Wax removal -
- Hearing tests -
- Hearing aids -
- Custom ear plugs -

Based in Codicote, 16 years NHS experience, home visits available.

Tel: 07495 65 50 84

www.hertshearing.co.uk

catherine@hertshearing.co.uk

Church Notice Board *continued from p44*

ALL SAINTS' DATCHWORTH

09.30 Sundays Holy Communion
 18.30 1st Sunday Sacred Space
 11.15 4th Sunday Family Service
 17.00 Thursday Evening Prayer



ST PETER'S TEWIN

09.30 Sundays Holy Communion
 11.15 3rd Sunday Family Service
 18.30 3rd Sunday Holy communion
 17.00 Monday Evening Prayer



AYOT ST PETER

11.15 Sundays
 1st: Matins:
(Book of Common Prayer, King James' Bible)
 2nd: Holy Communion
(Book of Common Prayer, King James' Bible)
 3rd: Family Service
(Common Worship, NRSV Bible)
 4th: Parish Communion
(Common Worship, NRSV Bible)
 5th: Holy Communion *(BCP, King James' Bible)*

ST GILES' CODICOTE

08.45 Sundays Holy Communion
 09.30 1st Sunday Worship 4U at Peace Memorial Hall
 10.30 2nd,4th Sun Informal Worship
 3rd Sunday Informal Worship with Communion

EVANGELICAL CHURCH WELWYN

09.45 Sunday Bible Classes *(All ages 7+)*
 11.00 Sunday *(facilities for young children)*
 18.30 Sunday *ditto*
 20.00 Wednesday Bible Study *(except 3rd Wednesday)*

T: 01438 715372

ROMAN CATHOLIC CHURCH of the HOLY FAMILY WGC

Knightsfield, WGC
 Fr Norbert Ferbandes

T: 01707 323234

LISTER HOSPITAL Stevenage (RC)

Chaplain Rev Anthony Curran
 (Deacon)

T: 01438 285138
 Urgent need T: 01438 314333
 Email: chaplaincy.enhtr@nhs.net

Nigel Cox Architects

ARCHITECTURE PLANNING INTERIORS

Experienced local Chartered Architect offering professional bespoke service

All types of work undertaken including community, commercial, listed building and conservation area commissions

Specialising in domestic new build, extensions and conversions

T. 07849 886755 E. nigelcoxarchitects@gmail.com



Architects Registration Board

GARDENING - LANDSCAPING - FENCING

by **The Great Outdoors**

YOUR LOCAL & PROFESSIONAL SERVICE PROVIDER



07543-689-328

TheGreatOutdoorsHerts.co.uk

SIMON ROPER SERVICES

WALL & FLOOR TILING

Ceramics – Porcelain – Stone
Tanking Systems
Under Tile Heating

T- 01438 811683

M- 07941 011467

Email : simon@roperservices.co.uk

Web : www.roperservices.co.uk

f : [simon roper tiling services](#)

HANDYMAN



available for
general home repairs &
HOUSE MAINTENANCE.

Indoor & outdoor work.

Painting, decorating, electrics,
plumbing & carpentry.

Kitchen/bathroom installations,
patios, fencing, flat packs, etc.

For a local, reliable, friendly &
prompt service;

Call DAVID at

D&L Home Services

01707 891544

07887 544087

MEDITATION

Jesus as Exemplar of God and our New Humanity

St Bonaventure (Bonaventura 1221 – 15 July 1274) was an Italian medieval Franciscan, scholastic theologian and philosopher. He became the seventh Minister General of the Order of Friars Minor and he was also Cardinal Bishop of Albano. He was canonized on 14 April 1482 by Pope Sixtus IV and declared a Doctor of the Church in the year 1588 by Pope Sixtus V. He is known as the "*Seraphic Doctor*". He wrote many academic and devotional works that were very influential at the time. One of his theological themes is about Jesus as Christ being the Exemplar (image and example) of God and of our New Humanity.

The Christ as the Exemplar of God

Jesus speaks about and reveals God as Father and in gospel of John speaks of this special relationship to the Father as Eternal and He Himself has within Himself the Word, something of Eternal origin and He is also the One through Whom God's active and enabling Spirit also comes to the world. So what we see in Jesus and what He did and said reveals the freshly the fullest character of God. He reveals God as a threefold communion of the most perfect and self –defusing love (charity) as Father, Son and Holy Spirit. He is also revealed as the One who as the Eternal Word from God is the principle of the greatest Mediation, bridging the divide between God and creation, bridging the divide between as all and the healer of divisions that exist between us. In Him we find the God who reconciles to take us back into the divine glory.

So we see in Jesus the truest and the best vision of God and what God is like and what God does.

Secondly, Jesus as the Christ, is our True Image who we are to be

In Jesus "The Christ" (the "Messiah", "anointed" by God to be His presence in the world) we see Him as the bearer of a new releasing Salvation that rescues people from their sinful nature, declares them NOT GUILTY of their sins and enables a new relationship to start that inwardly changes them. He is also the Exemplar of our true and good humanity. In Jesus we see what we can be as true and adopted children of God. We see this in His own obedience loving actions towards people. We see Him breaking down barriers between people and God and with each other. We see His unlimited charity that is a pattern for our charity.

Our Saviour and Brother Jesus

Revealing to us the Eternal and Undivided Trinity

Revealing to us how we are to be, and accepted by the highest charity.

Keep us looking to you, to find this most diffusive and ever extensive love

For ourselves, our true gladness and the healing of the world

CH